

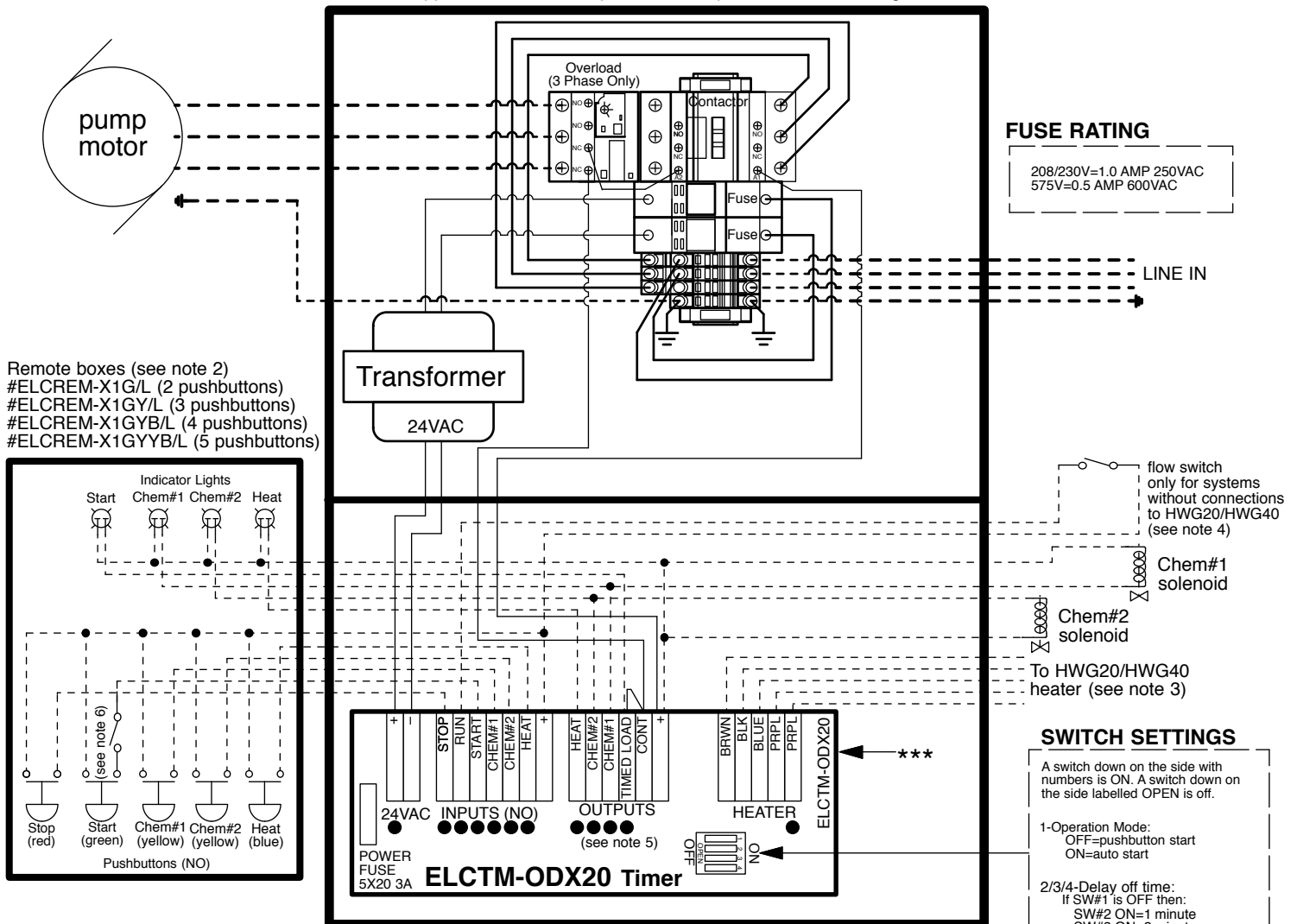


HIGH PRESSURE WASH SYSTEM TIMED SHUTDOWN WITH PUSHBUTTON START WIRING DIAGRAM

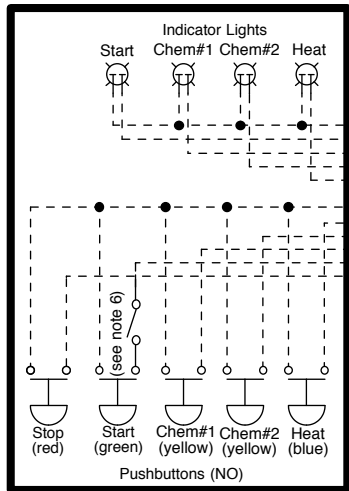
- FOR THE CPTX CONTROL PANEL-

IMPORTANT: This diagram is for use with CPTX control panels utilizing the ELCTM-ODX20 timer (Rev 2). This version of the timer has a serial number of 05112 or higher and can be identified by the marking "ELCTM-ODX20" on the right hand side of the timer (see *** below). Earlier versions of the ELCTM-ODX20 timer were identified with "CPTX" at this location. Control panels with the earlier version of this timer should utilize version 1.4 wiring diagram.

- This diagram represents the wiring for a typical installation. However, due to differences in equipment, your installation may not follow this diagram exactly. Contact your supplier should you require further information.
- Field wiring shown in dotted lines. Minimum field wire size is #16. Wire colour codes shown are optional and are for reference only.
- Motor starter coils, solenoid coils, relay coils, and other equipment are assumed to operate on 24 vac.
- All field installations must meet applicable codes. Always disconnect power before servicing.



Remote boxes (see note 2)
 #ELCREM-X1G/L (2 pushbuttons)
 #ELCREM-X1GY/L (3 pushbuttons)
 #ELCREM-X1GYB/L (4 pushbuttons)
 #ELCREM-X1GYB/L (5 pushbuttons)



FUSE RATING
 208/230V=1.0 AMP 250VAC
 575V=0.5 AMP 600VAC

SWITCH SETTINGS

A switch down on the side with numbers is ON. A switch down on the side labelled OPEN is off.

1-Operation Mode:
 OFF=pushbutton start
 ON=auto start

2/3/4-Delay off time:
 If SW#1 is OFF then:
 SW#2 ON=1 minute
 SW#3 ON=2 minutes
 SW#4 ON=4 minutes
 Values of all ON switches are added together to arrive at the total delay off time.
 If SW#2/3/4 are all OFF then delay off time is 30 secs.

If SW#1 is ON then:
 SW#2 ON=1 second
 SW#3 ON=2 seconds
 SW#4 ON=4 seconds
 Values of all ON switches are added together and then 5 seconds added to arrive at the total delay off time.
 If SW#2/3/4 are all OFF then delay off time is 5 secs.

- Note 1:** Connections to primary on transformer must match line voltage supplied.
- Note 2:** Not all remote boxes have all the pushbuttons & Indicator lights shown. For example #ELCREM-X1G/L has Stop & Start pushbuttons and a Start indicator but no Chem#1, Chem#2 or Heat pushbuttons & indicators. For these remote boxes not all connections shown are made.
- Note 3:** This connection is for HWG20 & HWG40 heaters equipped with ProSafe controls. These connections provide the power to heater, flow status to the ELCTM-ODX20 timer, and master-on control to the heater (see HWG20/HWG40 installation manual).
- Note 4:** If the HEATER BLUE terminal of the ELCTM-ODX20 timer is not connected to a HWG20 or HWG40 heater (see note 3), then a high pressure normally open flow switch must be connected. The flow switch must function such that it is open when there is no high pressure flow, and closed when there is high pressure flow.
- Note 5:** The TIMED LOAD output terminal provides 24vac at a maximum of 1 amp. The CHEM#1, CHEM#2, and HEAT output terminals provide 24vac at a maximum of 0.5 amps.
- Note 6:** Optional keyswitch can be installed for security. Operator then requires a key to start the system.