



MAGIKIST 

**Stainless steel
Vacuum**

***Instruction Manual
v1.2***

**VSW Wall Mount
Indoor Vacuum**

Thank you for purchasing a Magikist vacuum. Magikist vacuums are designed for ease of installation, operation, and maintenance. They are built ruggedly of stainless steel for years of use.

Please read this manual fully before installing and operating your vacuum. Should you still have questions regarding your vacuum, please contact your supplier who can provide you with the answers you require.

IMPORTANT SAFETY INSTRUCTIONS

READ ALL INSTRUCTIONS BEFORE USING THIS APPLIANCE.

- All local and national electric codes must be followed for installation and use. Licensed electricians are recommended for installation.
- The vacuum requires a grounded receptacle.
- High voltage is present under the top dome of the vacuum. Always disconnect power before performing service work under the top dome of the vacuum.
- This equipment incorporates switches, motors, or similar parts that can produce arcs or sparks. When installed in a service station or other gasoline dispensing locations, install this appliance a minimum of 20 feet (6 meters) horizontally from the exterior enclosure of any dispensing pump and a minimum of 18 inches (45 centimeters) above ground level.
- Use only as described in manual with manufacturer approved parts and accessories.
- Keep hair, loose clothing, fingers, and all parts of body away from openings and moving parts.
- Do not use to pick up flammable or combustible liquids, such as gasoline, or use in areas where they may be present. Do not pick up anything that is burning or smoking, such as cigarettes, matches, or hot ashes.
- Do not use without filter bags in place.

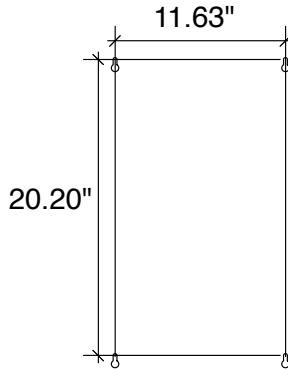
1) INSTALLATION

1.1) MOUNTING

Observe the IMPORTANT SAFETY PRECAUTIONS section when choosing your location for installing the vacuum.

The vacuum provides two mounting brackets each with two mounting holes for fastening the vacuum vertically to a surface. Ensure that the mounting surface has sufficient strength to support the vacuum.

You may use the dimensions shown here for the mounting brackets or you may hold the



vacuum in place at the desired location and mark the mounting holes on the mounting surface. The slotted mounting holes allow for the appropriate fasteners to be almost fully installed and then the vacuum hung on the fasteners. The fasteners can then be fully tightened.

Models VSW and VSW-T require 120 volt 20 amp grounded receptacle matching the supplied NEMA 5-20p plug supplied on the cord end of the vacuum. Models VSWH and VSWH-T require 240 volt 15 amp grounded receptacle matching the supplied NEMA 6-20p plug supplied on the cord end of the vacuum.

2) CONTROL WIRING AND OPERATION

2.1) VSW & VSWH FOR CAR WASH

Model VSW and VSWH are typically used in car wash applications where 24 vac is provided to the vacuum by a selector switch. Refer to the wiring diagram for the VSW or VSWH for connections to the selector switch.

Models VSW and VSWH rely on an external 24vac source for controlling the vacuum. It is recommended that a 1 amp fuse be installed on the connections from the vacuum to the selector switch.

2.2) VSW-T & VSWH-T WITH TOGGLE SWITCH OR MT140 TIMER

The wiring diagram for the VSW-T and VSWH-T show both connections for wiring a toggle switch to the vacuum as well as the MT140 remote pushbutton timer.

The toggle switch be rated for a minimum of 24 vac 0.5 amps. Move the toggle switch up to the on position to start the vacuum. To stop the vacuum move the toggle switch to the down off position.

The MT140 timer allows pushbutton start and stop control of the vacuum as well as a settable maximum time duration that the vacuum will operate once the start pushbutton is pressed. If the stop pushbutton is not pressed before the end of the set time period, the vacuum will shut off. The time duration can be set from 1 to 15 minutes in 1 minute increments including a setting for 30 seconds.

The DIP switches on the MTOD15 timer module in the MT140 timer control are used to set the time period. The DIP switches are numbered 1 to 4 and turned on when they are down on the number side of the DIP switch. Switches are off when they are down on the OPEN labeled side of the DIP switch. The switches are additive so that if switch 1 and 2 are on then the total operating time will be 1+2=3 minutes. The time value for each switch is as follows:

Switch #1 = 1 minute

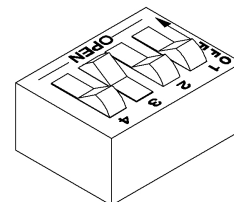
Switch #2 = 2 minutes

Switch #3 = 4 minutes

Switch #4 = 8 minutes

If all switches off then the time period is 30 seconds.

The LED lamps on the MTOD15 timer module indicate the momentary closure of the start or start pushbutton as labelled on the module.



Example of the DIP switch set for 4 minutes

3.0 MAINTENANCE

3.1 MOTORS

Periodically inspect the motor brushes. Replace motors or motor brushes when the brushes are less than 3/8" in length.

3.2 FILTER BAGS

Filter bags should be inspected and cleaned frequently. To protect the vacuum motors, bags should be replaced immediately if there is an opening in a bag or if there are signs of wear that could lead to an opening in a bag. The upper door allows access to the filter bags.

3.3 CLEAN OUT BIN

It is highly recommended that the clean out bin be removed and cleaned daily to remove debris, dust and any moisture that has collected. Moisture left in the clean out bin can produce offensive odours and possible mold growth. Daily cleaning of the clean out bin reduces the amount of debris, dust and moisture that the filter bags and motors may be exposed to. If moisture is frequently present in the clean out bin it is advised that during closing periods the clean out bin be removed from the vacuum and placed in an area where it can dry, and that both the upper and lower doors are left open to allow any moisture in the vacuum to escape. This also aids in allowing any moisture on the filter bags to escape. The clean out bin is removed through the lower door.

4.0 TROUBLESHOOTING

Symptom	Probable Cause	Corrective Action
Vacuum does not start.	No power to vacuum.	Ensure that 120 volts (VSW VSW-T) or 240 volts (VSWH or VSWH-T) is being supplied at the junction box in the vacuum, depending on the power requirements of your model.
	Fuse or fuses blown.	Check and replace fuses to the vacuum motors. See Symptom <i>Vacuum motor fuses or fuses blown</i> for further action.
	Selector switch not providing 24 vac to relay terminal on VSW (for VSW and VSWH in car wash)	Examine selector switch and related equipment to determine why 24vac is not being provided to vacuum.
	Toggle switch not working (VSW-T and VSWH-T models using toggle switch).	Replace toggle switch.
	Stop button stuck in depressed position (VSW-T and VSWH-T models with MT140 timer).	Repair or replace stop button.
	Defective MTOD15 timer module in MT140 timer.	Repair or replace MTOD15 module.
Vacuum does not stop.	Selector switch constantly providing 24 vac to relay terminal on VSW (for VSW and VSWH in car wash).	Examine selector switch and related equipment to determine why 24vac is constantly provided to vacuum.
	Toggle switch not working (VSW-T and VSWH-T models using toggle switch).	Replace toggle switch.
	Start button stuck in depressed position (VSW-T and VSWH-T models with MT140 timer).	Repair or replace stop button.
	Defective MTOD15 timer module in MT140 timer.	Repair or replace MTOD15 module.
Circuit breaker trips.	Electrical supply, including breaker and wire size, may not be sufficient to operate the electrical requirements of the vacuum and any other devices that may be operating on this same circuit.	Contact a certified electrician to check and ensure that breaker and wire size are sufficient for the vacuum and any other devices operating on the same circuit.
Vacuum motor fuse or fuses blown.	Motor brushes may be bad or shorted.	To confirm the problem is with one or more motors, use a clamp meter to measure the current draw of the motor(s). If the current draw exceeds the specifications of the motor(s) then replace the motor(s) or motor brushes.
No or low suction.	Hose cut or clogged with debris.	Check hose for cuts or debris and repair or replace as necessary.
	Filter bags clogged.	Check filter bags and clean.
	One or both of the motors may not be functioning properly.	Check motor fuses. If fuse is blown see Symptom <i>Vacuum motor fuses or fuses blown</i> for further action.
	Clean out doors not closed tightly with latch.	Ensure that latch is holding doors closed tightly. Latch can be adjusted if required.
	Clean out door gaskets or motor gaskets worn.	Replace leaking gaskets. Ensure that motors are held down securely by bracket or springs.

5.0 SPECIFICATIONS

Model & Description	Voltage	Amperage	Motors	Fuses
VSW and VSW-T	120	17	2	2 of 10A 3AB
VSWH and VSWH-T	240	8	2	2 of 8A 3AB



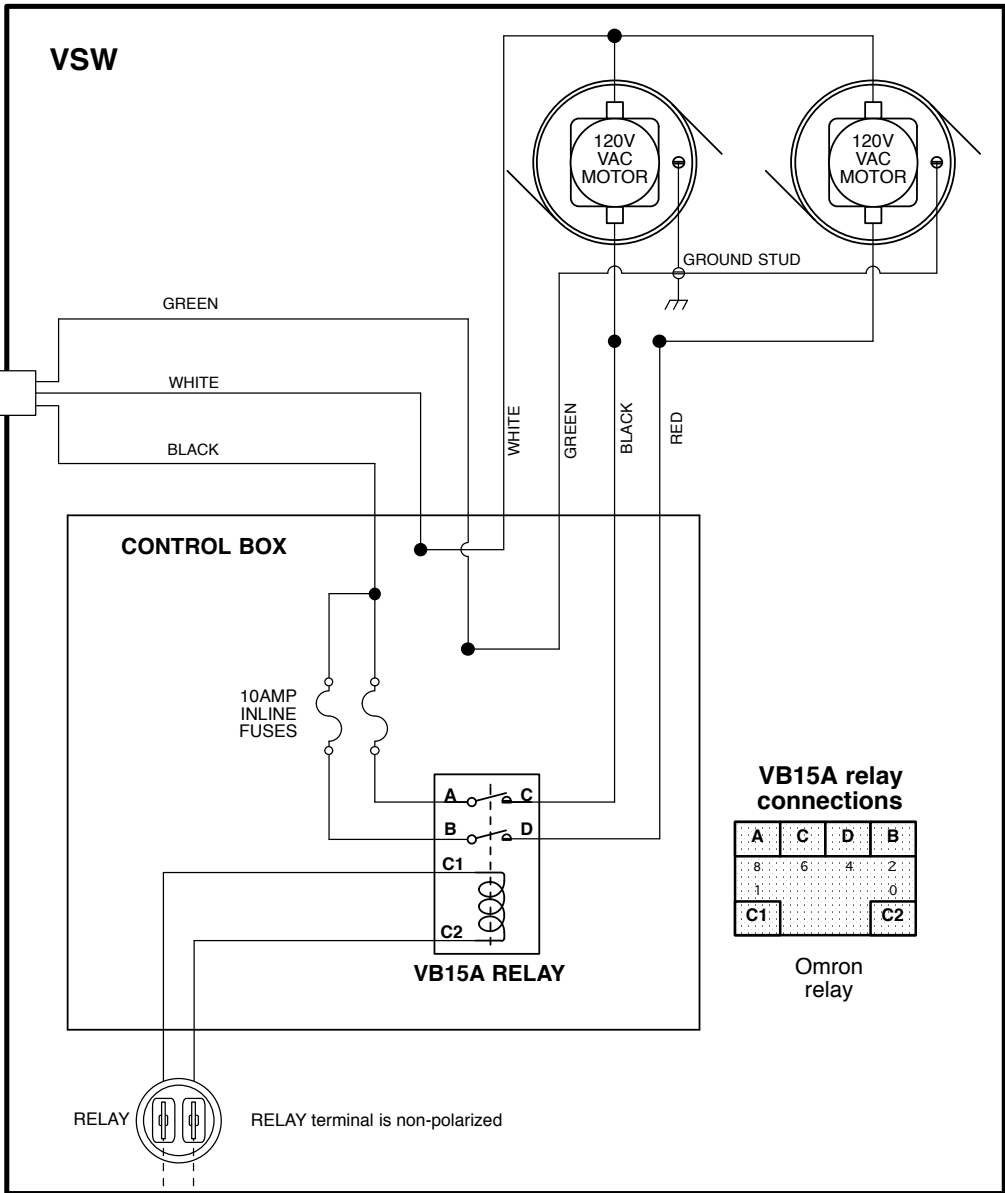
VSW Wiring to Car Wash Selector Switch

FACTORY WIRING

FIELD WIRING

Nema 5-20P plug

120VAC
20AMP
SUPPLY

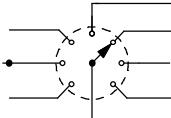


VB15A relay connections

A	C	D	B
8	6	4	2
1			0
C1			C2

Omron relay

Car Wash Selector Switch



24VAC



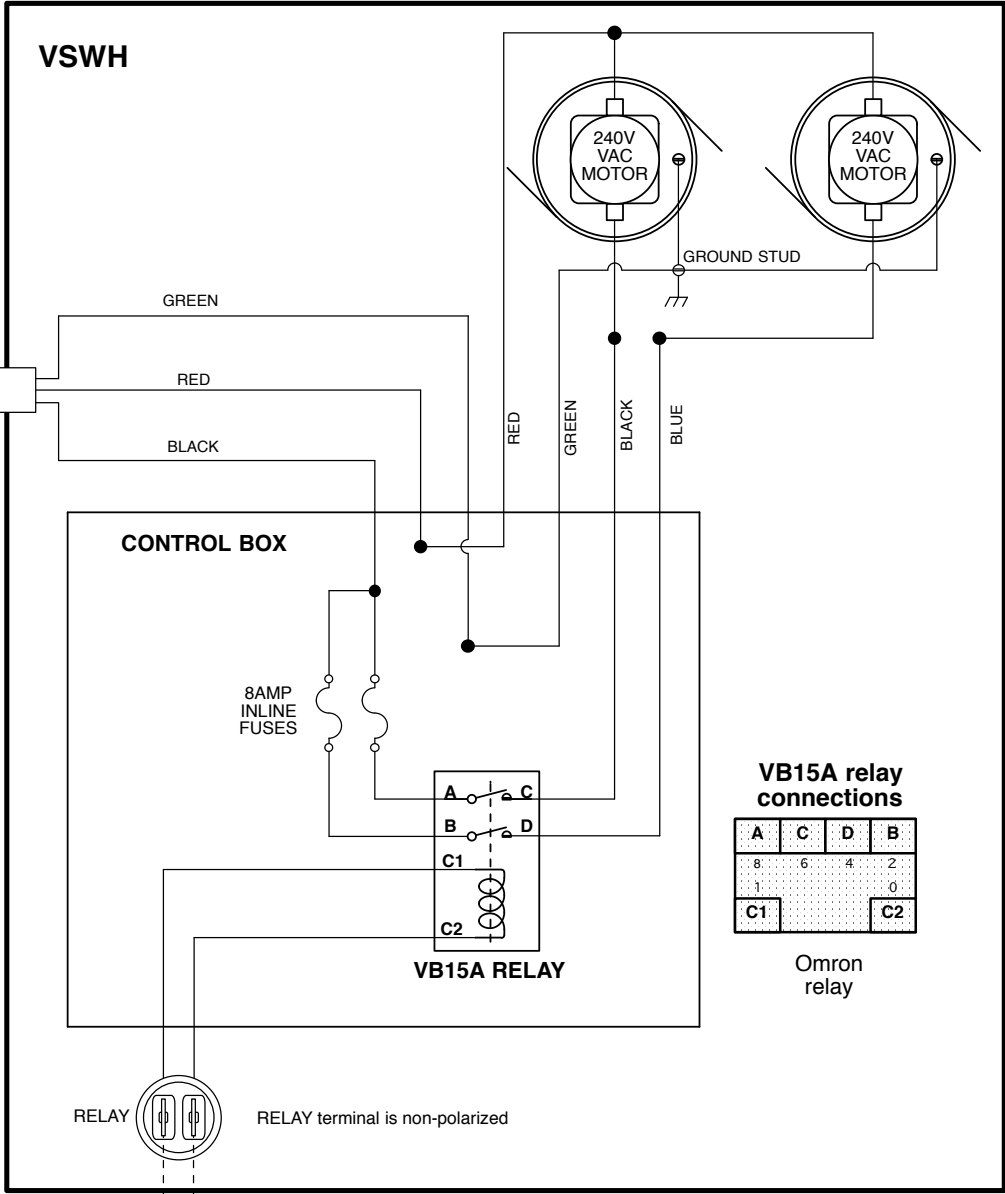
VSWH Wiring to Car Wash Selector Switch

FACTORY WIRING

FIELD WIRING

Nema 6-20P plug

240VAC
1 PHASE
15AMP
SUPPLY



VB15A relay connections

A	C	D	B
8	6	4	2
1			0
C1			C2

Omron relay

RELAY terminal is non-polarized

Car Wash Selector Switch

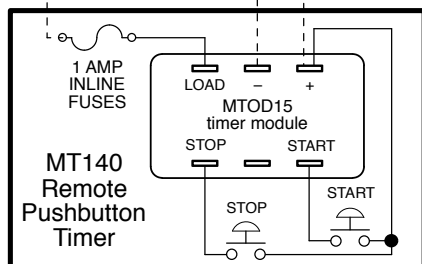
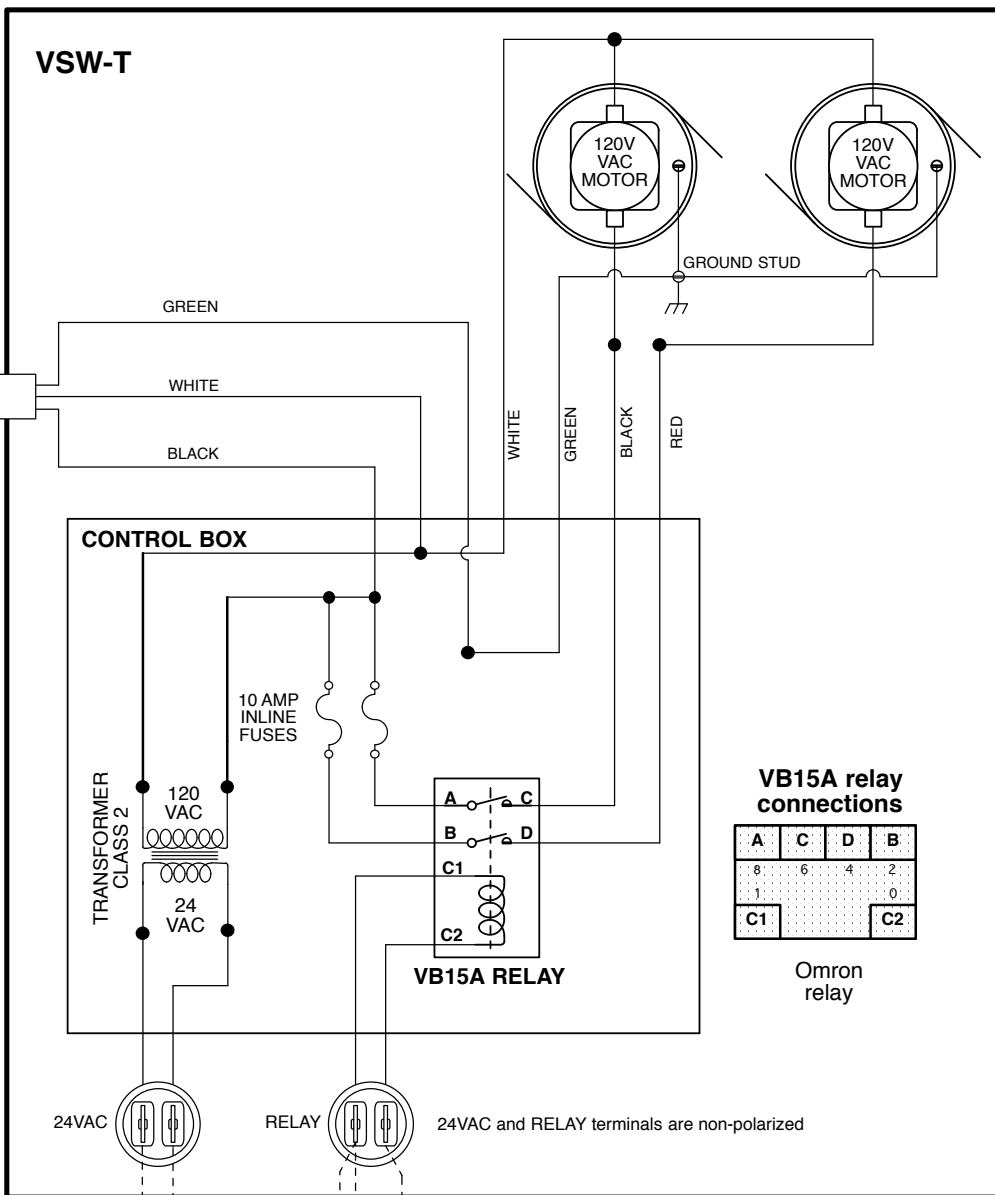
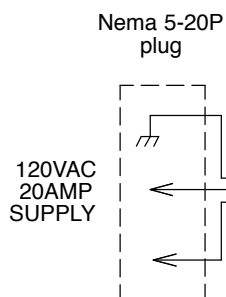
24VAC



VSW-T Wiring to MT140 Remote Pushbutton Timer

FACTORY WIRING

FIELD WIRING





VSW-T Wiring to Toggle Switch

FACTORY WIRING

FIELD WIRING

Nema 5-20P plug

120VAC
20AMP
SUPPLY

VSW-T

CONTROL BOX

TRANSFORMER
CLASS 2

120
VAC

24
VAC

10 AMP
INLINE
FUSES

VB15A RELAY

24VAC

RELAY

24VAC and RELAY terminals are non-polarized

GROUND STUD

120V
VAC
MOTOR

120V
VAC
MOTOR

VB15A relay
connections

A	C	D	B
8	6	4	2
1			0
C1			C2

Omron
relay

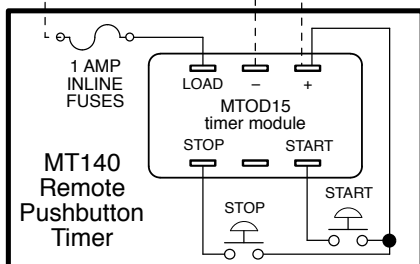
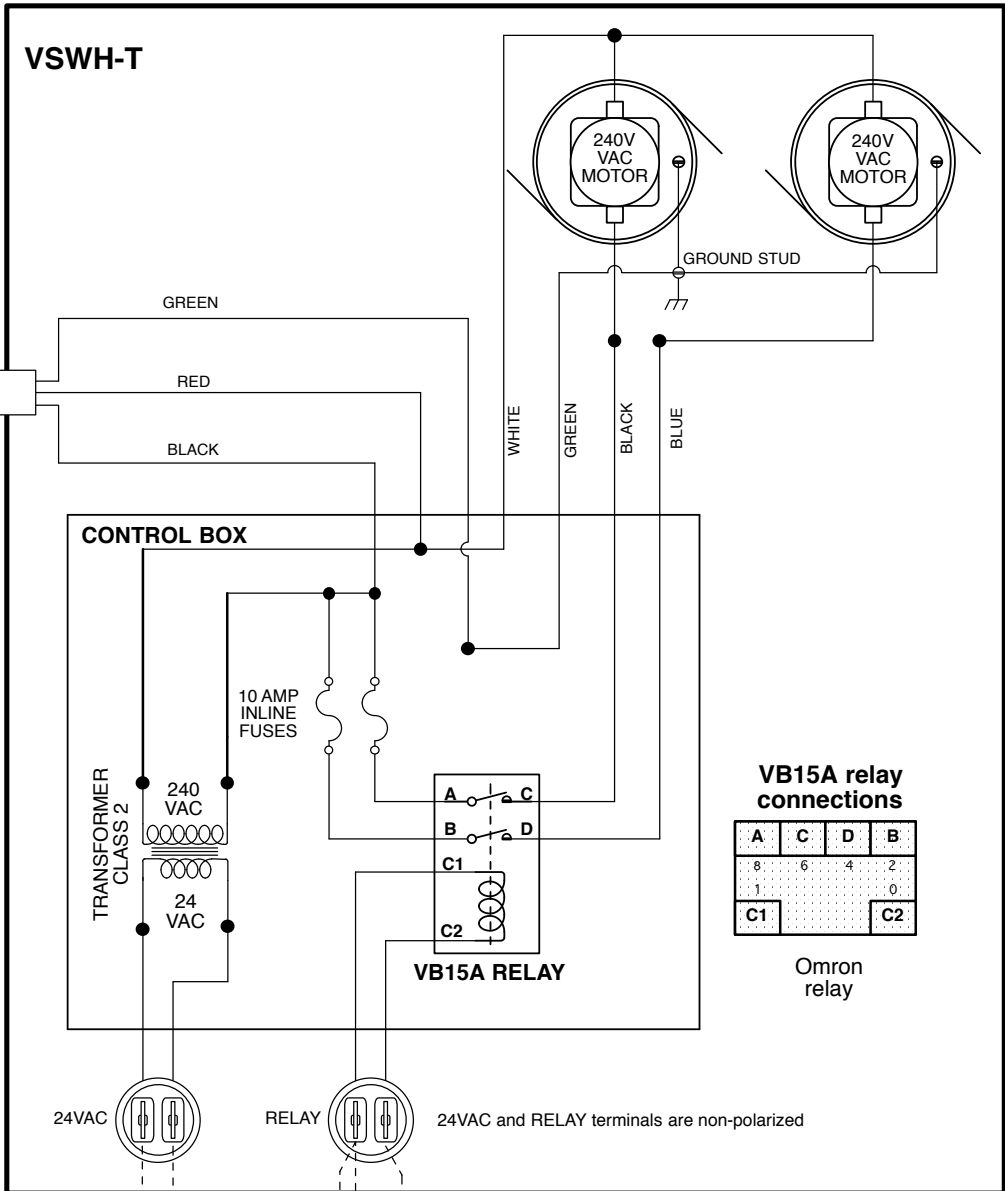
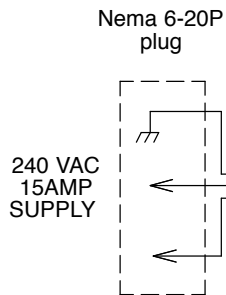
Remote
toggle switch



VSWH-T Wiring to MT140 Remote Pushbutton Timer

FACTORY WIRING

FIELD WIRING





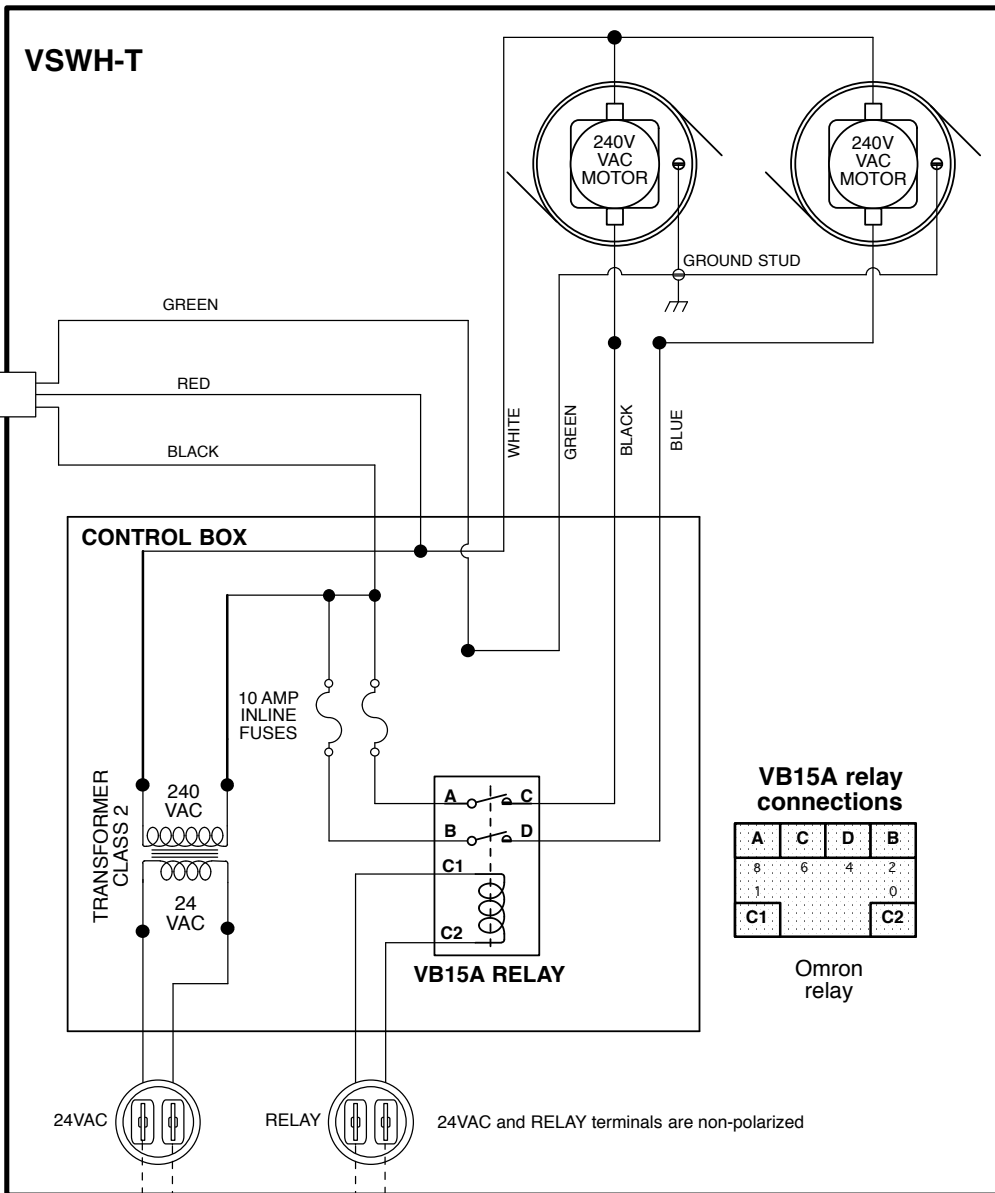
VSWH-T Wiring to Toggle Switch

FACTORY WIRING

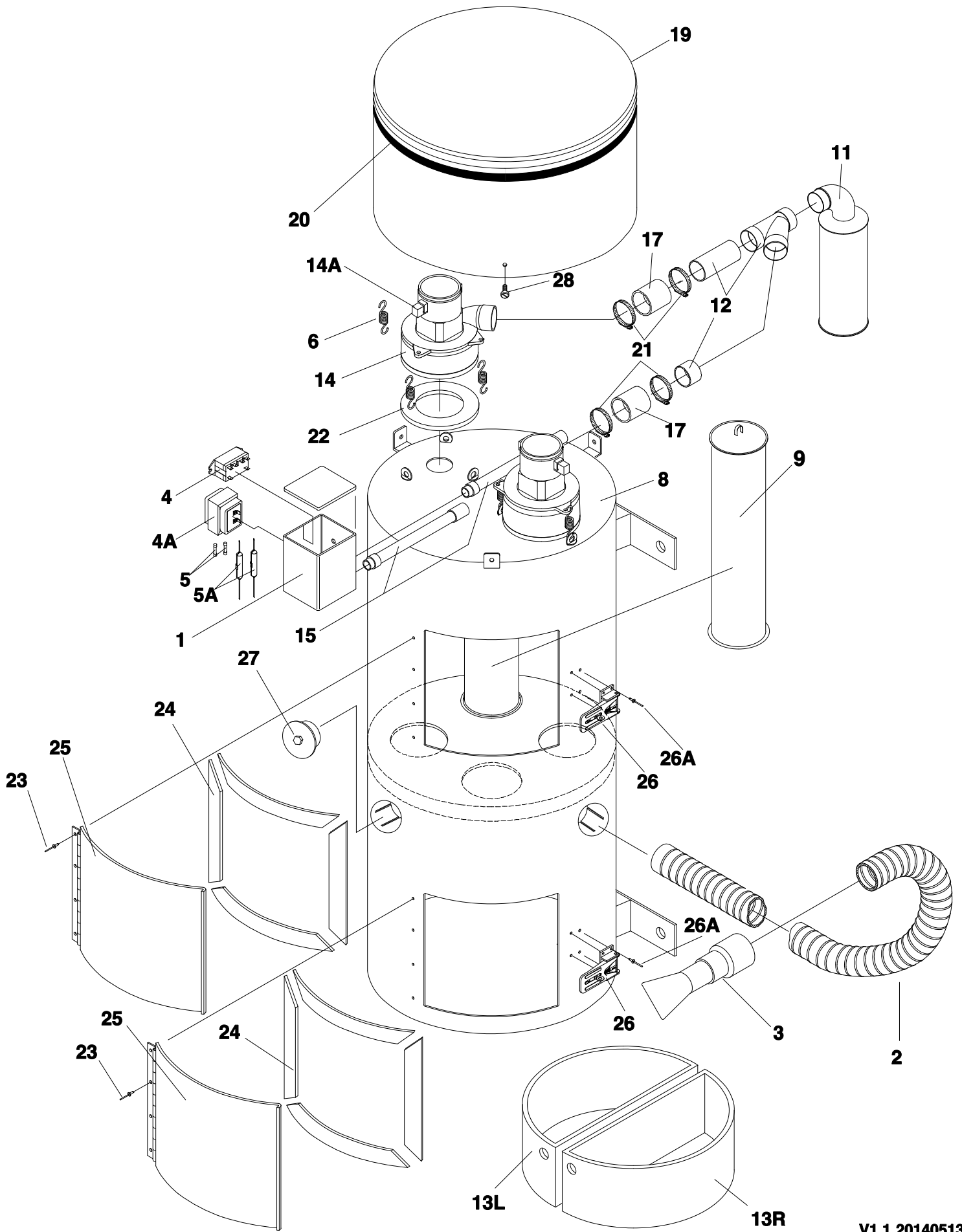
FIELD WIRING

Nema 6-20P plug

240 VAC
15AMP
SUPPLY



Remote
toggle switch



VSW, VSW-T, VSWH, VSWH-T Parts List

Item	Part Number	Description	Qty
1	ELCBOX-JB442	Junction box	1
2	VACWWGB25	Vacuum hose, 1.5", 25ft	1
3	VACTAS	Aluminum vac nozzle w/cuff	1
4	ELCREL-25/2A/24	Relay	1
4A	ELCCTR40A0	Transformer	1
5	ELCFUSE-3AB10	fuse, 10A. 3AB (120 volt vacuums)	2
	ELCFUSE-3AB8	fuse, 8A. 3AB (240 volt vacuums)	2
5A	ELCFUSE-ILG1	inline fuse holder	2
7	VSW7D	Motor hold down spring	1
		lock nut	1
		Control box for pushbuttons	1
8	VSW1	vacuum body	1
9	VSW9	filter bag	4
11	VSW79	muffler	1
12	VSW103	Y fitting assembly	1
13	VSW13	dust container	1
14	VM392T	vac motor (120 volt vacuums)	2
	VM397T	vac motor (240 volt vacuums)	2
17	VSW104	hose adapter	2
19	VSW1D	Dome assembly	1
20	LBL9002	dome label	2
21	ELCFSNR	gear clamps	4
22	VSW7A	gasket, motor to motor mount	2
23	VWS25-R	rivet	8
24	VSW25G	door gasket	2
25	VSW25	door	2
26	VSW26	door clasp	4
26A	VSW26-R	rivet	8
27	VSW84	inlet expansion plug	1

WARRANTY

Magikist vacuums are warranted by the manufacturer to be free from defects in material and workmanship for one year from date of manufacturer's shipment, provided the equipment is installed and operated in accordance with factory recommendations and instructions. This warranty is limited to repairing or replacing products which manufacturer's investigation shows were defective at the time of shipment by the manufacturer. This warranty does not cover normal wear, nor does it cover damage caused by neglect, misuse, accident, faulty installation or tampering in a manner to impair its normal operation. All products subject to this warranty shall be returned **freight prepaid** to Magikist Ltd., Winnipeg, Canada for examination, repair, or replacement.

The express warranty set forth herein is in lieu of all other warranties, express or implied, including without limitation any warranties or merchantability or fitness for a particular purpose and all such warranties are hereby disclaimed and excluded by the manufacturer. Repair or replacement of defective products as provided is the sole and exclusive remedy provided hereunder and the manufacturer shall not be liable for any further loss, damages or expenses, including incidental and consequential damages, directly or indirectly arising from the sale or use of this product.

This warranty is subject to the installation and operating conditions as described in this manual. This warranty does not apply to optional equipment which may have been supplied with your vacuum. Refer to the warranty supplied with the optional equipment for information on that equipment's warranty.

Parts originally manufactured by Magikist Ltd. must be used or this limited warranty will be voided. Magikist Ltd. will be absolved of any liability if parts other than Magikist Ltd. manufactured parts are used.

There are no warranties which extend beyond the description of the face thereof.
